

User Manual

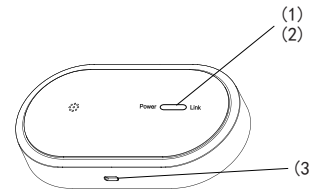


Key Features

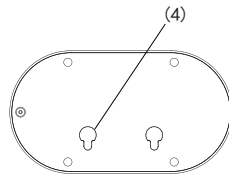
- Innovative GSM&Wifi dual network operating platform.On Wifi network, the alarm system will work without any fee. If no WIFI ,it will work on GSM automatically. With industrial grade WIFI module and technology, the system is more stable and safe.
- Supports mobile phone application control (Android and IOS)
- Support 32 wireless zones.
- App check the system in real time: system arm or disarm , sensor low voltage or not ; sensor connect to panel or not.
- Periodic supervision for wireless PIR and magnetic switch
- Window/door open remind
- User account / zone naming
- Built-in buzzer
- 6 private phone Numbers(or mobiles)

02

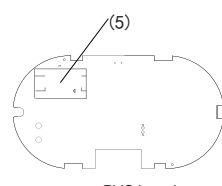
Diagrammatic sketch



(1) LED indicator (2) Reset Button (3) Power input



(4) Mounting hole



(5) SIM card slot

03

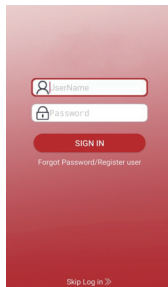
Installation

1、Power on the device

when you start the device power, the led light is lit on and buzzer sounds " di " .

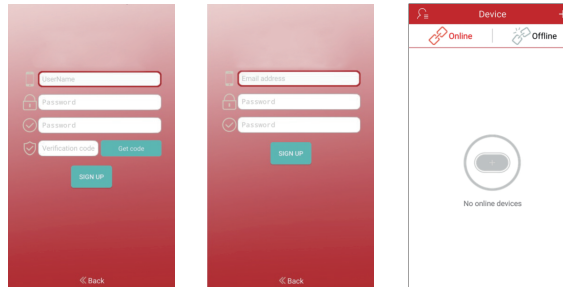
2、Download the application

Please download the application "JD-HOME system" from App store or Google play, then register an account according to the following steps;Log in the application with the registered account.



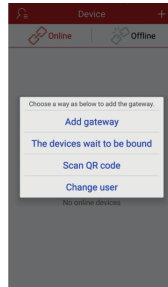
Please select a way to register your account
By Phone
By Email

04



3、Wifi Setting

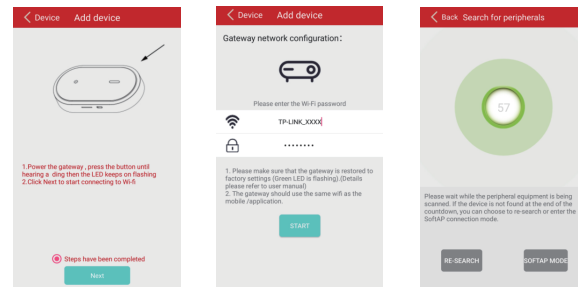
Pls Make sure the wifi is available on your mobile phone, then click "+" and choose" add device".



05

Pls keep on pressing the hub reset button around 5 seconds, when the hub sounds" di" and the LED keeps flashing, it is ready to add wifi.

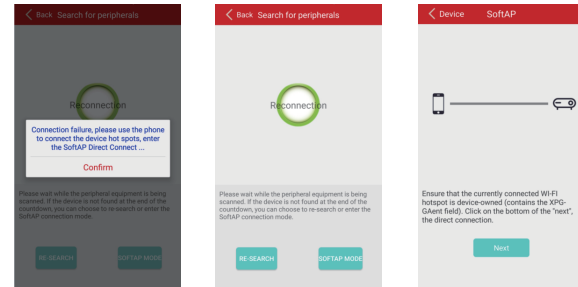
Input the wifi password (same wifi as your mobile phone) and click " go".



If failed in adding the wifi, you could re-connect wifi or click the wifi hotspot"softap" which is provided by the hub. The hotspot name begins with "XPG-GAgent-"and the password is "123456789".

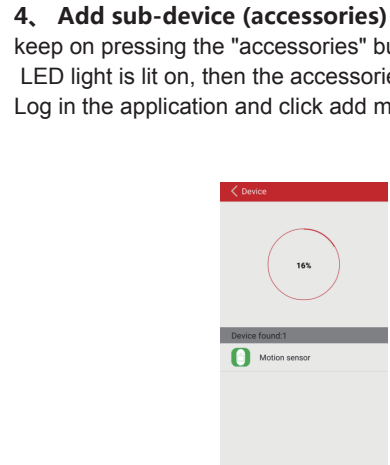
After wifi or hotspot added successfully, please click "bind" in the page of device list .

06



Pls pay attention that the hub could only be bound to application within 5 minutes after the hub connect to the power. In order to bind it to application after 5 minutes, you have to re-start the hub power.

07



4、 Add sub-device (accessories)
keep on pressing the "accessories" button around 10 seconds, LED light is lit on, then the accessories are ready to be added. Log in the application and click add more "sub-device".

Please pay attention if your accessories are using zigbee technology,the zigbee accessories need to be registered following the below steps.

If the accessories are not zigbee , just pressing the button on the device or just simply triggered the device to finish the registration(if no button on the device) and do not need to open the housing.

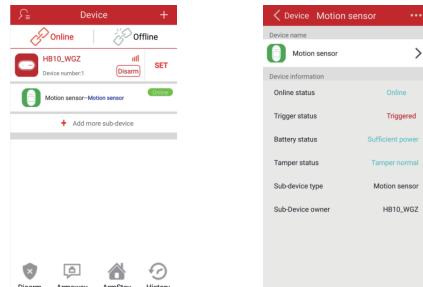
08

Remote control: open the back housing,you would find a button on the PCB. Pressing this button to register the remote control with the gateway or keeping on pressing the button around 10 seconds to reset the remote control.

Door sensor: open the back housing,you would find a button on the PCB. Pressing this button to register the door sensor with the gateway or keeping on pressing the button around 10 seconds to reset the door sensor.

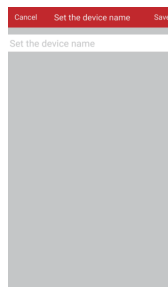
5、 Accessories settings

Click the gateway device list, you could see the following accessories list, then click accessories, you could check the accessories information, including: on line state, trigger state, voltage state, anti-tamper state, equipment type, center control equipment.

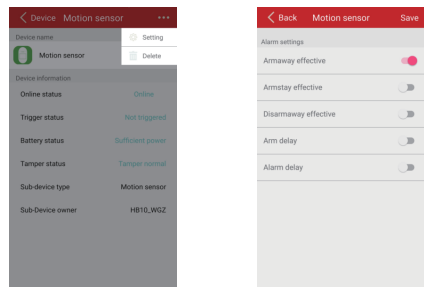


09

Click the accessory which needs to be changed in name, then input the new name in the table as below picture.



- (1). Choose the accessory that needs to be changed in the setting.
- (2). Click this icon "+" on top of right corner.



10

Arm away available : the accessory will get triggered when the system was setting in arm away status.

Arm Stay available : the accessory will get triggered when the system was setting in Arm Stay status.

Disarm available : the accessory will get triggered even the system was setting in Disarm status.

Arm delay(Exit delay) : turn on the arm delay function (the delay time could not be set to "0"), when the accessory get triggered during the setting of arm delay time, the system will not alarm.

Alarm delay(Entry delay) : turn on the Alarm Delay function, (the delay time could not be set to "0"), If the device get triggered during the setting of alarm delay time, the system will not alarm.

Some accessories are forbidden to change in the setting, such as the remote control, or smoke sensor , or gas sensor ,etc. which default setting are always in working status.

6、 Delete accessories

(1). Choose the accessory that need to be deleted.

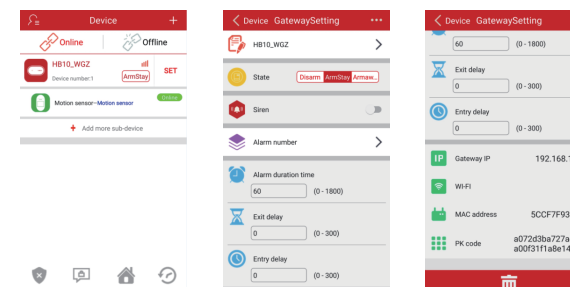
(2). Click this icon "+" on top of right corner.

(3). Choose "delete" .

11

Gateway settings

Click the "set"of the gateway , enter into the gateway parameter setting



1、 Gateway state

There are three different status to choose, Disarm, Arm Stay, Arm away

2、 Siren On or Off

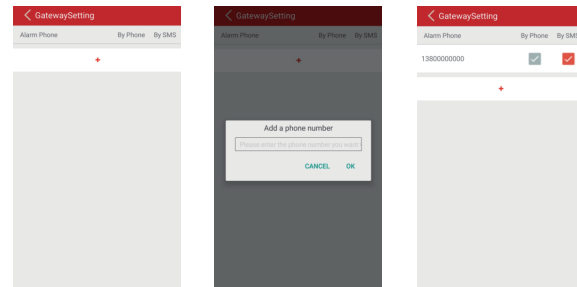
If you turn on the siren manually, the gateway will alarm , the siren will sound and LED will flash.

3、 Set the alarm phone number

There are 6 phone numbers could be set. The setting of phone number type could be chosen by the user (sending messages or making calls), message alarm in default phone number is considered to be valid.

12

If the system got triggered and wifi is not available, the system will send the alarm message or make a call to the user.Alarm message includes the accessory name + alarm type



4、 Alarm time

Alarm time means the gateway buzzer/siren continuous opening time (in seconds) when the system gets triggered. The default time is 60 seconds and the user could set the time range from 0-1800 seconds.

5、 Exit delay time(Arm delay time) setting

The time could be set from 0-300 seconds and the default time is 0 second.Exit delay time means the time could be set by the user when the system gets triggered, but during the delay time, the system will not send the alarm signal.

13

6、 Entry delay time(Alarm delay time) setting

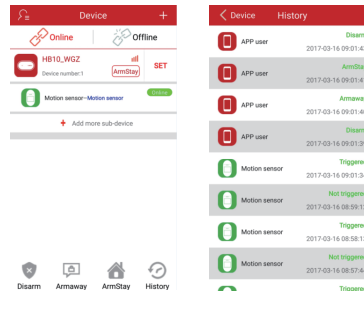
The time could be set from 0-300 seconds and the default time is 0 second. Entry delay time means the time could be set by the user when the system get triggered, but during the entry delay time, the system will not send the alarm signal.

7、 Gateway information Checking

The information about the gateway including IP address, WIFI MAC address , WIFI hot spot name, PK code which could be found in the gateway setting page.

8、 Checking the logs

At the bottom corner of the device list menu ,the logs could be founded by click"record". Logs included : device name , Log time and action event and there are around 90 latest logs could be store.



14

Appendix

1、 LED indication

Red LED

Arm away	Continues to be lit on
Disarm	On: 5 seconds , Off: 200 milliseconds and keeps repeating
Arm stay	On: 5 seconds ,Off: 200 milliseconds, on:200 milliseconds,Off: 200 milliseconds and keeps repeating
Network state	Red & green LED alternately flashing, on 200 milliseconds, off 200 milliseconds and keeps repeating.

Green LED

Wifi setting	On: 200 milliseconds , Off: 200 milliseconds and keeps repeating
SoftAp Hot spots setting	On: 200 milliseconds , Off: 2 seconds and keeps repeating
Connecting to Internet server failed	On: 2seconds , Off: 200 milliseconds and keeps repeating
Connecting to Internet server successfully	Continues to be lit on

Buzzer

Arm away	"di" two times
Arm Stay	"di" two times
Disarm	"di" one time
Alarming	On: 200 milliseconds , Off: 200 milliseconds and keeps repeating

15

2、 Specification

Adapter : input AC 100V-240V 50/60Hz Output DC 5V 1A

Working Voltage : DC 5V

Static working current : < 180mA

Alarm current : < 300mA

Buzzer : 70db(within 1m distance)

Working Temperature : -10℃ ~ +50℃

Communication way : Zigbee/433Mhz/868Mhz(optional)

Wifi module:
Communication Frequency : 2.4GHz-2.5GHz (2400M-2483.5M)

Wireless Standards : IEEE 802.11 b/g/n

GSM module:
GSM frequency : 850/900/1800/1900MHz

Receiving sensitivity : < -106dBm

Standby Current : < 25mA

Receiving Current : < 75mA

Zigbee:
Communication Frequency : 2405MHz-2480MHz

Wireless Standards : IEEE 802.15.4

Receiving sensitivity : < -100dBm

Standby Current : < 50mA

Receiving Current : < 25mA

Transmitting Current : < 175mA

433Mhz/868Mhz:
Frequency : 868MHz±0.5MHz 433MHz±0.5MHz

Wireless distance : ≥ 100m (In open area)

16

3、 Trouble & Solutions

Trouble	Solutions
AirLink Wifi connection failed	Please try to connect to the hotspot of the gateway by softap pattern
Wifi signal is weak	please be near to the router or hotspot
The gateway could not be controlled by APP	Please double check if the gateway is connecting to the internet
Application works abnormally or exits quickly	close APP background processing, Re-start the APP
gateway off line or no wifi	Double check if wifi is available or re-start the gateway
The accessories do not work after added to the gateway	Double check if the accessories added to the gateway successfully or not Please check the battery of the accessories , If the accessories is low-voltage,please use a new battery

17